

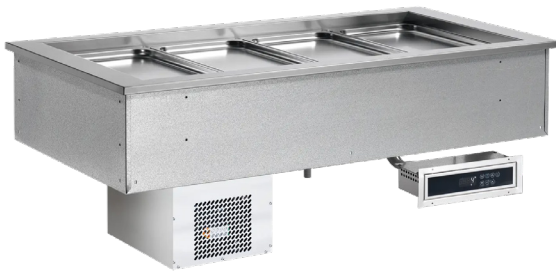
Technical data sheet

Product features



Display unit chilled GN 2-1/1 - 200 mm drop-in

Model	SAP Code	00012053
--------------	-----------------	----------



- Buffet type: GREEN - cooled, static cooling, deep
- Device properties: Chilled
- Number of GN / EN: 2
- GN / EN size in device: GN 1/1
- GN device depth: 200
- Minimum device temperature [°C]: 4
- Maximum device temperature [°C]: 8

SAP Code	00012053	Loading	230 V / 1N - 50 Hz
Net Width [mm]	844	Number of GN / EN	2
Net Depth [mm]	650	GN / EN size in device	GN 1/1
Net Height [mm]	290	GN device depth	200
Net Weight [kg]	48.00	Minimum device temperature [°C]	4
Power electric [kW]	0.247	Maximum device temperature [°C]	8

Technical data sheet

Technical drawing



Display unit chilled GN 2-1/1 - 200 mm drop-in

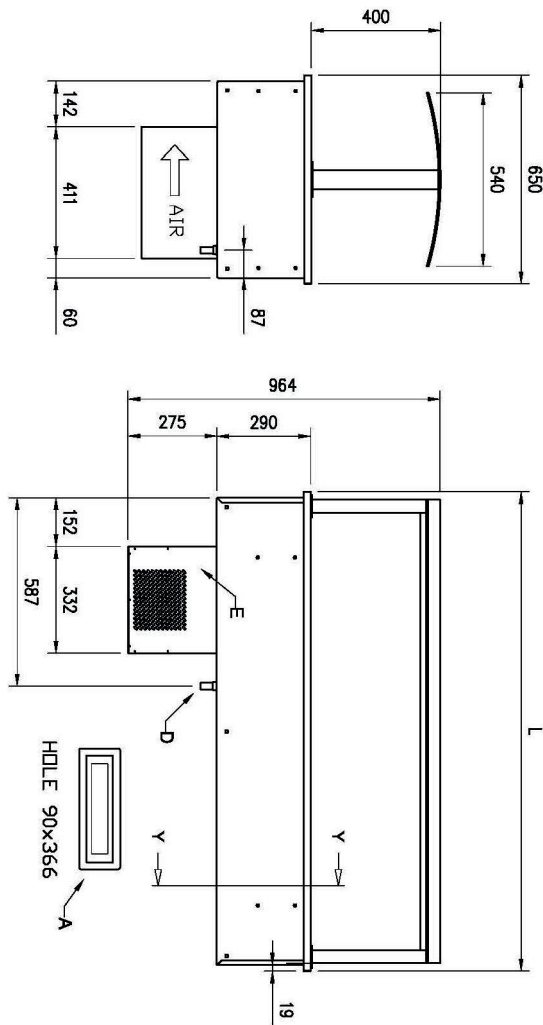
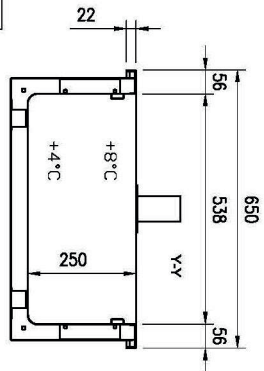
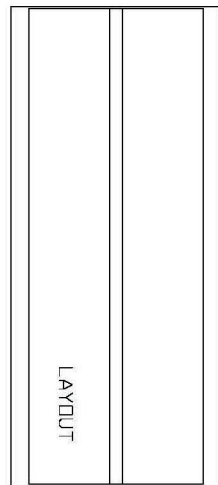
Model

SAP Code

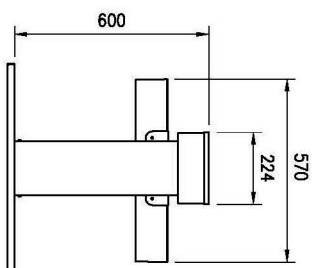
00012053

A= ELECTRICAL CONNECTION
 D= WATER DISCHARGE Ø16
 E= GAS CONNECTION Ø6 Ø8
 F= WATER BOX

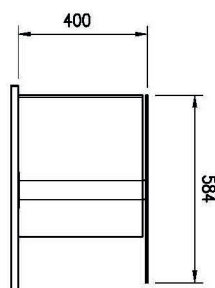
GN	L	HOLE
2/1	844	814x620
3/1	1169	1139x620
4/1	1494	1464x620
5/1	1819	1789x620
6/1	2144	2114x620



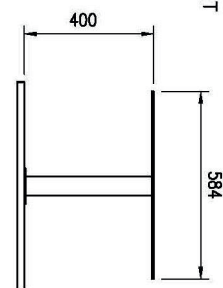
TRADITION



SERVICE



FLAT



Technical data sheet

Product benefits



Display unit chilled GN 2-1/1 - 200 mm drop-in

Model

SAP Code

00012053

1

Built-in

the possibility to plant in a dispensing block design

- unified design of the dispensing line
- a luxurious look that customers appreciate

2

Static cooling

simultaneous use of direct injection and boiler, maintenance of 100% humidity, or its regulation

- less drying of food
- more economical

3

GN insertion up to 200mm

variability of use

- possibility of cooling different types of food and larger volumes
- saving time, space, costs

4

Rounded corners

basins without sharp edges and corners

- higher hygienic safety
- time saving due to easy cleaning

5

Removable evaporator filter

basins without sharp edges and corners

- time saving for cleaning

6

All-stainless steel construction

harmless to health for contact with food
robustness

- long service life
- very easy to clean

7

One large bathtub

one controller for the whole basin

- very easy to use
- easy maintenance

Technical data sheet

Technical parameters



Display unit chilled GN 2-1/1 - 200 mm drop-in

Model

SAP Code

00012053

1. SAP Code:

00012053

2. Net Width [mm]:

844

3. Net Depth [mm]:

650

4. Net Height [mm]:

290

5. Net Weight [kg]:

48.00

6. Gross Width [mm]:

908

7. Gross depth [mm]:

714

8. Gross Height [mm]:

1100

9. Gross Weight [kg]:

58.50

10. Device type:

Electric unit

11. Material:

AISI 304

12. Buffet type:

GREEN - cooled, static cooling, deep

13. Device properties:

Chilled

14. Exterior color of the device:

Stainless steel

15. Power electric [kW]:

0.247

16. Loading:

230 V / 1N - 50 Hz

17. Number of GN / EN:

2

18. GN / EN size in device:

GN 1/1

19. GN device depth:

200

20. Minimum device temperature [°C]:

4

21. Maximum device temperature [°C]:

8

22. Cross-section of conductors CU [mm²]:

0,5

- Výkon (kW): 2,4-3,3 (230 V)

23. Refrigerant:

R290